

## STUDY OF PRANAN DEVICES EFFECTIVENESS TO NEUTRALIZE THE HARMFUL EFFECTS OF LOW-INTENSITY RADIATIONS FROM MOBILE PHONES ON THE HUMAN BODY

The purpose of this study is to test the effectiveness of the devices PhiWaves and PhiOne developed and patented by Pranan Technologies, aimed at counteracting the possible negative impact of mobile telephony on the human body.

The analysis of the data obtained concludes that the two initial hypotheses have been proven:

**First**, that mobile telephony unbalances and unstructures the HEF (Human Energy Field) and the Meridians System, producing a negative effect on the HEF balance.

**Second**, that PhiOne and PhiWaves protectors developed and patented by the company Pranan Technologies protect the HEF and the Meridians System, and even go beyond the protection itself, improving the Energy Balance of the Human Organism.

Figures 24 and 26 have been chosen for summary. They are the Virtual Chakra displays. They unify in 7 levels the 49 meridians measured by the GDV-EPC system. If a single energy center is out of balance it indicates that it really is (the systems works with arithmetic means), and if the average is unbalanced, it means that the associated meridians are unbalanced too.

The GDV-EPC system is based on the correlation of energy meridians to report their condition.

It shows two pieces of information; the energy level and the symmetry level. This latter reports the energy balance, the emotional and mental levels, the right and left brain hemispheres energy levels and the intuition and action levels.

Fig.24. After talking on the mobile phone *WITHOUT PROTECTORS*

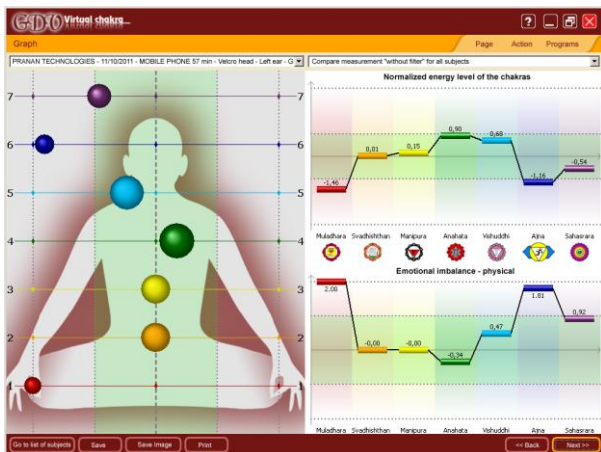
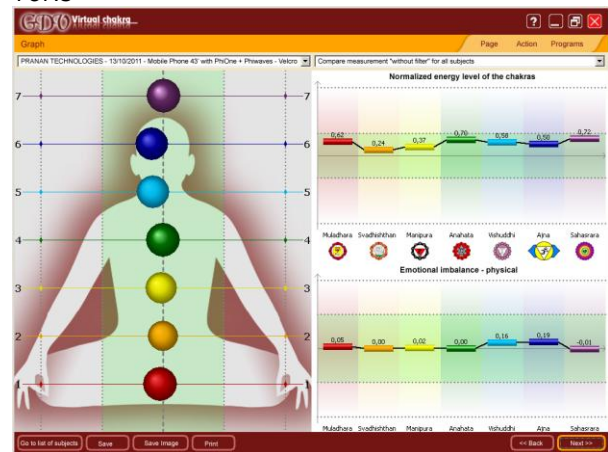


Fig. 26. Before talking on the mobile phone *WITH PROTECTORS*



Be seen in an unequivocal manner are altered how much energy level thereof, as the level of intuition-action.

**Energy Level:** Before talking on the mobile phone *WITHOUT PROTECTORS* PhiOne and PhiWaves, the energy level of the 7 chakras was correct, after talking, the 1st and 6th chakras showed energy deficiency.

**Hemispheric Symmetry:** Before talking on the mobile phone *WITHOUT PROTECTORS* PhiOne and PhiWaves, the symmetry of the 7 chakras is correct, then, after talking, the 1st, 6th and 7th chakras became unbalanced.

1 GDV: Gas Discharge Visualisation  
 2 EPC: ElectroPhotonic Capture

Figure 26 shows the "Virtual Chakra" after talking on the mobile phone WITH PROTECTORS. Measurements taken WITH PROTECTORS PhiOne and PhiWaves undoubtedly confirm the benefit of such protectors.

Energy Level: Before talking on the mobile phone, the energy level of the 7 energy centers was correct, being also maintained at the correct level after talking.

Hemispheric Symmetry: Before talking on the mobile phone WITH PROTECTORS PhiOne and PhiWaves, the symmetry of the 7 energy centers is correct. After talking, the 5th and 6th energy centers show improved energy levels.

Once again it is conclusively proven that the Protection Technology developed by Pranan Technologies not only protects against low-intensity radiation emitted by mobile phones but also benefits the Human Energy Field.

Figure 06 show the Energy Field display (Energy BioField) before vs. after experimental subject talks on the mobile phone. It clearly shows a decrease of the area in various left side meridians, where subject placed the phone (left ear). These data show how mobile phone use has partly unstructured the HEF.

Fig. 06. After talking on the mobile phone WITHOUT PROTECTORS    Fig. 08. After talking on the mobile phone WITH PROTECTORS

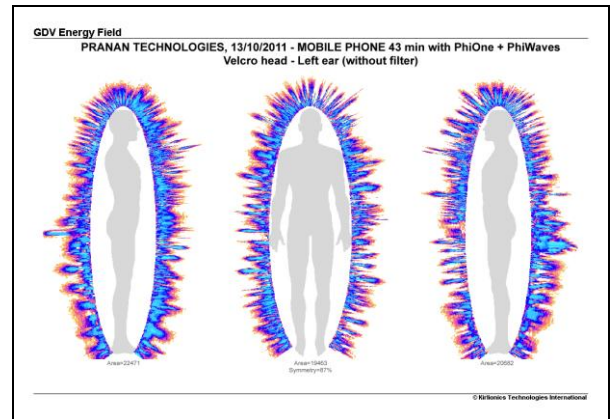
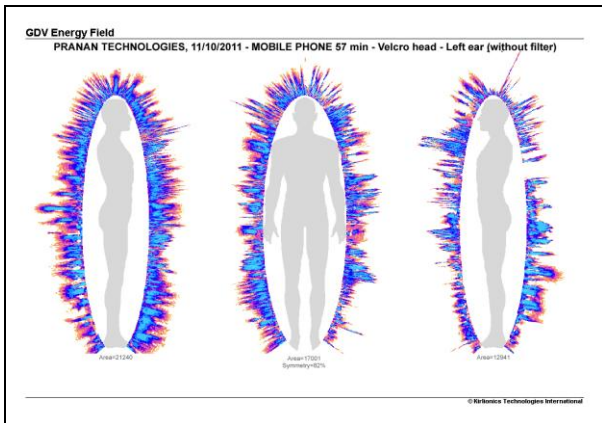


Figure 08. show the Energy Field display (Energy BioField) before vs. after experimental subject talks on the mobile phone, but this time WITH PROTECTORS (PhiOne and PhiWaves). It clearly shows a considerable increase of the area in various left side meridians, where subject placed the phone (left ear), on this occasion with protectors. These data show how the use of mobile phone WITH PROTECTORS (PhiOne and PhiWaves) not only neutralizes the negative effects of mobile phone but partly structures the HEF too.

***The results of the indicators analyzed in this study are conclusive, and we can state that PhiOne and PhiWaves protectors have acted in a meaningful way to protect and even re-balance the HEF (Human Energy Field) and the Meridians System, when we use mobile telephony.***

Mondragon, November 1, 2011

Eusebio González Martín  
 Engineer - Degree in Psychology  
 Bioelectrography Researcher authorized by IUMAB\*-Spain  
 (\*International Union of Medical and Applied Bioelectrography)

For more information see full study.